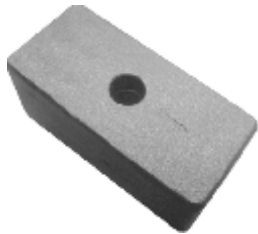




LIMERTRUCK

Peças para Truck's e Carretas



CUNHA MOLA TRAS. MB 1935 A 1941
(CUNHA CALÇO) Nº ORIG. 388.351.7528

013 000139



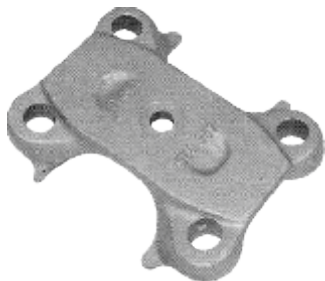
CUNHA MOLA DIANT. MERCEDES
1938 (CUNHA CALÇO)

013 000140



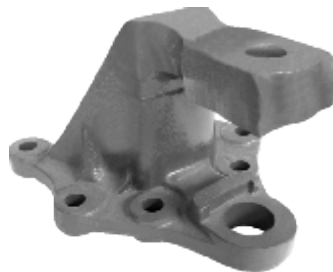
SAPATA DA MOLA MB 709 TRAS. AÇO
Nº ORIG. 688.325.0012

013 000142



SAPATA DA MOLA MB 912/914 e 712C
TRAS. AÇO Nº ORIG. 670.325.0012

013 000143



SUPORTE DA MOLA T/P/D
OF-1620 (F-22mm) ATÉ 97

013 000145



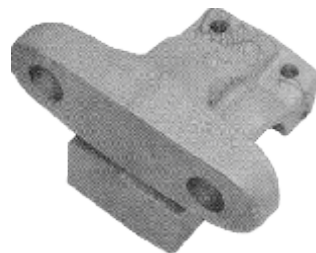
SUPORTE DA MOLA T/P/D
OF-1620 (F-24mm) APOS 97

013 000146



CUNHA DA MOLA TRAS. MB 1938
(CUNHA CALÇO) Nº ORIG. 693.351.7028

013 000149



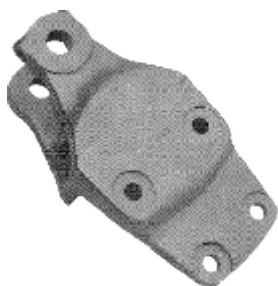
CAVALETE DO MANCAL DIANT. 1618
BICUDINHO Nº ORIG. 384.323.7163

013 000150



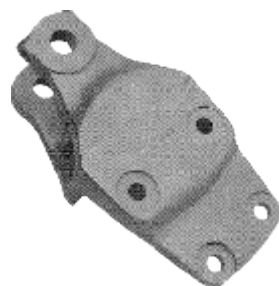
TAMAPA DO MANCAL DIANT. 1618
BICUDINHO Nº ORIG. 384.323.7021

013 000151



SUP. MOLA DIANT. P/ DIANT. 2635
FURO 18mm Nº ORIG. 388.322.7201

013 000152



SUPORTE DA MOLA DIANT. LK-1938 / 2638
FURO 21mm Nº ORIG. 388.322.7301

013 000153



SUPORTE DA MOLA DIANT.
P/ DIANT. 1924/ 1929

013 000154